

# PROLIFT™

PROFESSIONAL LIFT SYSTEM  
(Please also see our video at [www.safetshade.com](http://www.safetshade.com))

## Installation Instructions

**NOTE: For Best Results We Recommend Using 1.4mm Cord.**

**Before Starting: Please confirm you have ALL of the following:**

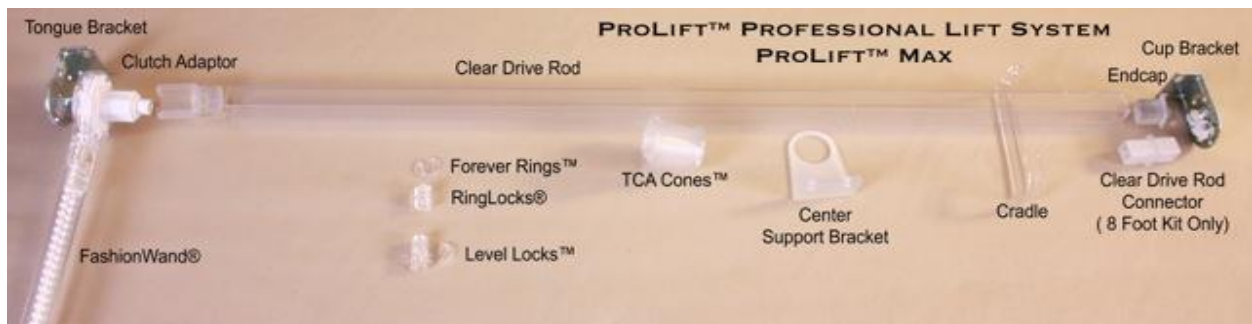
**1 Fashion Wand® with Beaded Cord Loop Encased.**

**1 – 4 ft. Clear Drive Rod with 1 Clutch Adapter and 1 End Cap and 5 TCA (Traversing Cord Accumulator) Cones. [8 Foot Kit includes 2 – 4 ft. Clear Drive Rods and 10 TCA Cones.]**

**Bag # 1 with 50 Ring Locks® and 50 Forever™ Rings. [8 Foot Kit includes 100 Ring Locks® and 100 Forever™ Rings.]**

**Bag # 2 with 5 Level Locks™ (5 Ring Locks® and 5 Level Lock™ inserts) and 1 Cradle. [8 Foot Kit includes 10 Level Locks™ (10 Ring Locks® and 10 Level Lock™ inserts) and Clear Drive Rod Connector]**

**Bag # 3 with 1 pair of Mounting Brackets (1 Tongue Bracket and 1 Cup Bracket) and 1 Center Support Bracket and 7 Screws. (SCREWS NOT SHOWN) [8 Foot Kit includes 3 Center Support Brackets and 11 Screws.] (SCREWS NOT SHOWN)**



**\*\*We Recommend that you come in 2 ½" on either side with your 1<sup>st</sup> Column of Rings\*\***  
**After you have fabricated your shade with Forever™ Rings and attached your shade to the board you can begin:**

1. Install both mounting brackets to your board. Place the "Tongue" Mounting Bracket on the side of the board that you want your operating Fashion Wand®.

**FOR 8 FOOT KIT ONLY- Join Clear Drive Rods together with Clear Drive Rod Connector then proceed to step # 2.**



# PROLIFT™

## PROFESSIONAL LIFT SYSTEM

2. Measure outside of bracket to bracket. Cut Clear Drive Rod 2" shorter than your bracket to bracket measurement. Example: Bracket to Bracket = 40" – cut your Clear Drive Rod at 38"  
Attach Clutch Adapter on the operating side of your Clear Drive Rod ("Tongue" Mounting Bracket side). Place End Cap on the opposite end of the Clear Drive Rod.
3. Slide TCA Cones (1 for every column of rings) and Center Support Bracket (Do Not Screw Down.) onto Clear Drive Rod. Keep the larger side of the TCA Cone facing Fashion Wand® and Space TCA Cones around the Center Support Bracket.
4. Attach Fashion Wand® to the Clutch Adapter.
5. Place Clear Drive Rod with assembled components (Clutch Adapter, End Cap, Fashion Wand®, Center Support Bracket & TCA Cones) into the Mounting Brackets and Line up TCA Cones directly above your column of rings.
6. Attach Center Support Bracket to board with the Screws provided and Attach Cradle near Center Support Bracket with Screws provided. Make Sure J Shape of Cradle is facing the fabric.
7. String your shade from the bottom up applying your Ring Locks®. Leave 2" of cord at bottom of shade. (For Leveling) When your cord reaches the TCA Cone, thread cord through the hole on the TCA Cone flange and tie off on outside of cone. Make sure all cords are tied off on the same hole on each cone.
8. Attach Level Locks™ to bottom of shade. (See Instructions Below) 1 Level Lock™ per column. Tie a knot below each Level Lock™.

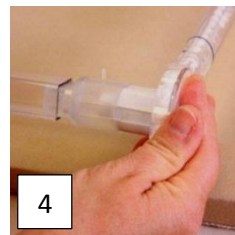
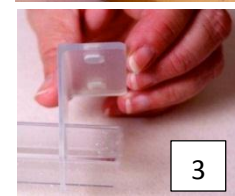
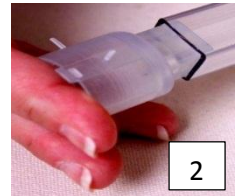
NOTE: When the ProLift Professional Lift System is installed and operated properly you are Guaranteed 100% Cordless Safe®

Your shade is now complete.

Please feel free to call us with any questions.

336-228-6000.

[www.safetshade.com](http://www.safetshade.com)



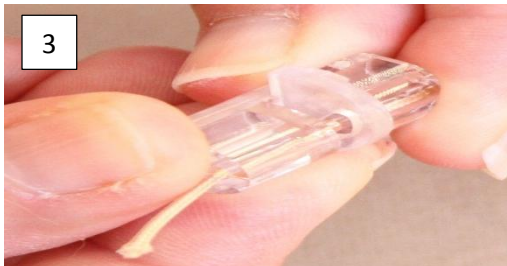
**SAFE-T-SHADE®**

# PROLIFT™

## PROFESSIONAL LIFT SYSTEM

### Instructions for Level Lock™

1. Apply curved shaped portion of the Level Lock™ Insert into Ring Lock®.
2. Thread cord through the Ring Lock® and Level Lock™ Insert.
3. Rotate Level Lock™ Insert around (flat side toward back of Ring Lock®) and “CLICK” it into its locked position.
4. Tie a knot below Level Lock™



# PROLIFT™

## PROFESSIONAL LIFT SYSTEM

### **Operating Instructions for Fashion Wand®**



To Lower Shade: Slide handle up to comfortable height. Squeeze bottom of tilt handle and pull down. Repeat until shade is at desired position.



To Raise Shade: Slide handle up to comfortable height. Squeeze top of tilt handle and pull down. Repeat until shade is at desired position.

